

Adding RCA outputs to Mercedes Benz 2005 C240 W203 Audio20 Radio/CD player

Jan 2 2010 Edmond Zauner Montreal

Goal of this project is to add 4 channels of low level RCA outputs to the standard Audio 20 unit for use with standard car audio power amps. I wanted to avoid using high level to low level adaptors.

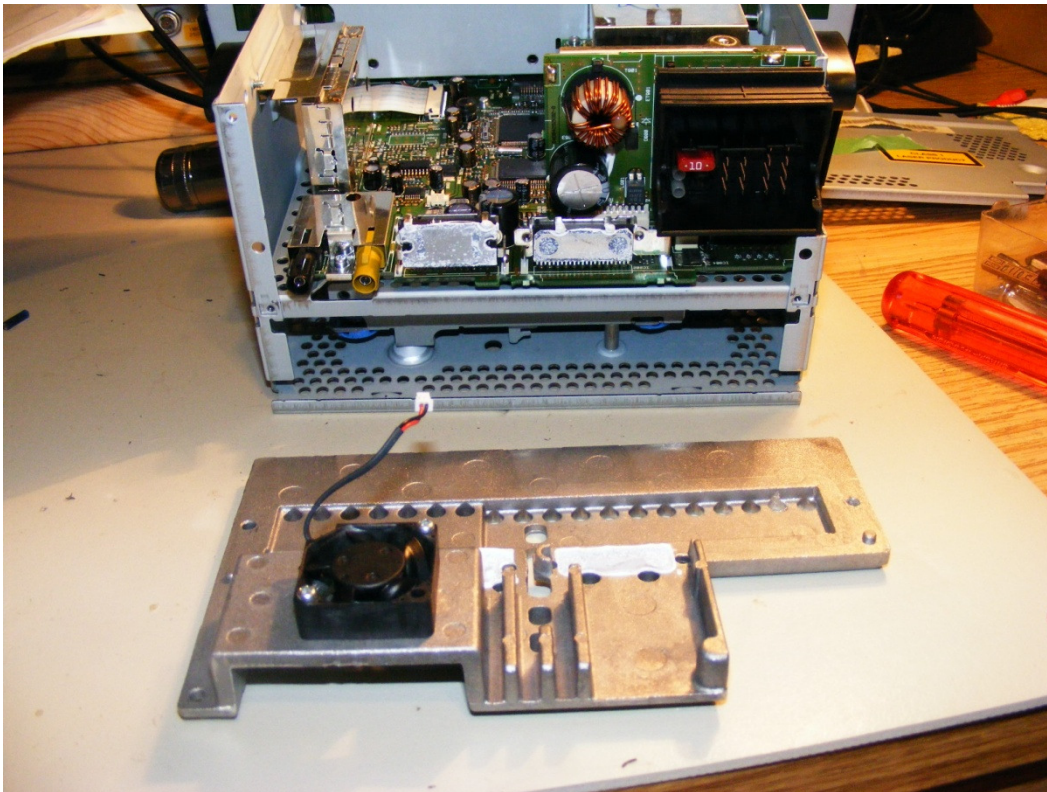
I have given enough information for anyone with sufficient electronics hobby knowledge to do this.. If you have to ask too many questions, I suggest you do not have the capability or experience to do this. The pcb is cramped and uses very small smt parts. Very hard to solder!

First thing was to open up the unit to see what signals where accessible.

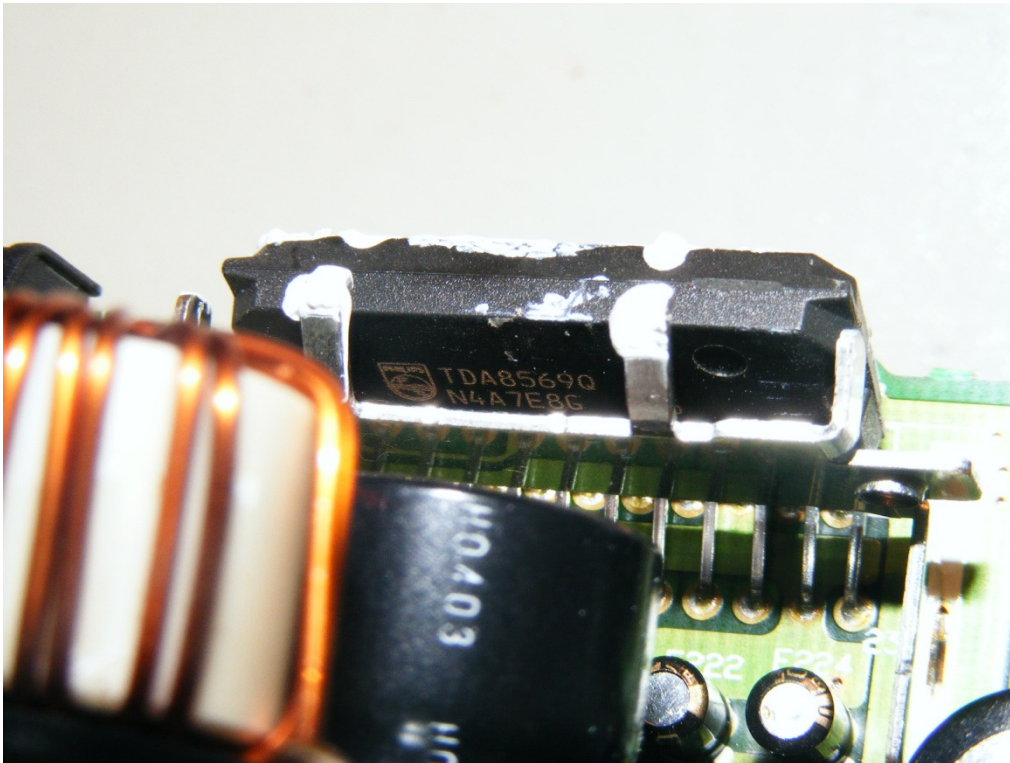
3 screws remove the cover



And a few more screws remove the rear heat sink. Disconnect the fan power connector



What ICs do we have? There are 2 power ICs in back and the one on the right (rear view) is the Power Amp.



It is a NXP TDA8569Q. (formerly Philips semiconductor) Very easy to find the data sheet